

PANZER EG240

Patented® GAS SYSTEM



EG240 Semi-Automatic
Shotgun Model
OWNER INSTRUCTION MANUAL

⚠ WARNING THIS OWNER'S MANUAL CONTAINS IMPORTANT INFORMATION ABOUT YOUR FIREARM. READ AND UNDERSTAND ALL INSTRUCTIONS AND WARNINGS IN THIS OWNER'S MANUAL BEFORE USING THE FIREARM. THIS MANUAL SHOULD ALWAYS ACCOMPANY THE FIREARM AND MUST BE TRANSFERRED WITH IT SHOULD THE OWNERSHIP CHANGE. KEEP THIS FIREARM AND ALL FIREARM RELATED PRODUCTS SECURED AND AWAY FROM CHILDREN OR OTHER UNAUTHORIZED USERS.

CONTENTS

Safety review.....	3
Model overview.....	3
Assembling the firearm.....	4
Using the safety.....	4
Loading the firearm.....	5
Unloading the firearm.....	5
Clearing misfires.....	6
Field stripping.....	6
Firearm reassembly.....	7
Installation of the Magazine Plug.....	7
Choke tube - cleaning and maintenance.....	8
Cleaning, proper care and maintenance.....	9
Use of steel shot.....	9
Storage.....	10
Service.....	10
Warranty.....	11
Technical data.....	12
Purchaser's record.....	12
Notes.....	13
Parts Identification.....	14-15
Contact.....	Back Cover

IMPORTANT!

Even the safest gun can potentially be dangerous to you and others when it is not properly handled. Before using this firearm, completely read and understand this owner's manual. Always treat an unloaded firearm as if it were loaded.

⚠ WARNING Never point the firearm at anything you are not willing to destroy. Always keep your finger away from the trigger until you are ready to fire and your sights are on the target. Always keep your firearm pointing in a safe direction until you are ready to fire. Be sure of your target and beyond.

⚠ WARNING IF THIS FIREARM IS CARELESSLY OR IMPROPERLY HANDLED, UNINTENTIONAL DISCHARGE COULD RESULT AND COULD CAUSE PERSONAL INJURY, DEATH OR DAMAGE TO PROPERTY. For your safety and the safety of others, this owner's operating manual contains important instructions, warnings and safety procedures that must be understood before using your Panzer Arms firearm. It is imperative that you read the entire manual and if you do not understand any part of it or the operation of your Panzer Arms firearm, you should seek professional firearms instruction. Never disassemble your firearm beyond what is shown in this manual.

NOTICE Panzer Arms shall not be responsible for personal injury, death or damage to property resulting from either intentional or accidental discharge of this firearm, or from its function when used for purposes or subjected to treatment for which it was not designed. Panzer Arms will not honor claims involving this firearm which result from careless or improper handling, unauthorized adjustment or parts replacement, corrosion, neglect, or the use of wrong caliber ammunition, other than original high quality commercially manufactured ammunition in good condition, or any combination thereof. Panzer Arms will not honor claims involving this firearm for any reason or cause when the second or subsequent owner makes such claims. Before the firearm left the factory, it was tested, carefully inspected and packaged. Panzer Arms cannot control product handling after it leaves the factory; therefore please examine this firearm carefully at the time of purchase to ensure that it is unloaded and undamaged.



SAFETY REVIEW

- Do NOT alter or modify your firearm.
- Remember to have it serviced regularly.
- Always handle your firearm as if it were loaded.
- Never point your firearm at anything you don't intend to shoot.
- Always make sure your firearm is not loaded and the bolt catch is latched open and to the rear before laying it down or handing it to someone.
- Never leave a loaded firearm unattended.
- Always be sure bore, muzzle, chamber and action are clear of obstruction or water.
- Always check that ammunition is clean and undamaged.
- Never drink alcoholic beverages or take drugs before or during shooting.
- Always wear eye and ear protection when shooting.
- Always keep safety on "SAFE" when the firearm is loaded and a round is chambered until ready to shoot.
- Never indulge in "horseplay" when holding your firearm. Use screw drivers that are designed for firearms and fit screw slots properly to avoid damaging screw heads and slots.
- Never transport a loaded gun.
- Always store the firearm and ammunition separately, locked and away from children's reach.
- Always keep your hands away from the muzzle of the gun to avoid serious injury.

⚠ WARNING Before assembling, be sure that the firearm safety is ON SAFE—by pushing the manual safety button rearward (down), and the chamber is empty.

MODEL OVERVIEW

Your Panzer Arms shotgun is gas operated. The gas created from firing alive shot shell operates the action. Once the first shell has been fired, the next shell in the magazine will automatically cycle into the chamber, and this cycle will continue (each time the trigger is pulled) until all shells loaded in the magazine have been fired. The bolt will remain locked in the open position after the last shell is fired. The technologically advanced gas metering system allows you to shoot 2-3/4" and 3" shells interchangeably with any ammunition of the proper gauge for your shotgun with flawless performance. This and other fine features ensure that your shotgun will be a source of pride and pleasure for years to come.

For many years, Panzer Arms has been associated with the gun industry. Modern technology, true value and affordable quality are all features that are synonymous with the name Panzer Arms. We at Panzer Arms thank you for the privilege of delivering a product to you that will provide you with many years of pleasurable use. Happy shotgunning.

HOW TO CHANGE THE PISTON

Your EG240 Shotgun comes with two pistons; LIGHT LOAD (assembled to the gun) and HEAVY LOAD (within the box) for the use of the following shot shells: LIGHT LOAD: Below 1.5oz or 1.450fps HEAVY LOAD: Above 1.5oz or 1.450fps



1. Disassemble the fore-end



2. Take out the barrel



3. Take the piston out



4. Put the other piston in

ASSEMBLING THE FIREARM

1. In the packaging, the firearm is assembled excepted Barrel Shroud (Fig.1)



2. To assemble the firearm, unscrew the Magazine Tube Cap first



⚠ WARNING If you try to unscrew Barrel Shroud first that may cause scratches.

3. Screw the Barrel Shroud first (Fig.3) then screw magazine tube cap. (Fig.4)



⚠ WARNING Always engage the manual safety (ON SAFE) until you are ready to fire. Mechanical safeties can fail, never rely on the mechanical safety alone. Always use safe gun handling practices.

USING THE SAFETY

SAFE POSITION - To engage the safety:

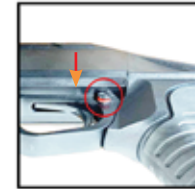
Push the manual safety button so that it protrudes from the right side of the firearm. The firearm is on safe when the “red band” marking is **NOT showing**. The safety should always be in the “on” or “safe” position until you intend to fire the firearm.

FIRE POSITION - To disengage the safety:

Push the manual safety button so that it protrudes from the left side of the firearm. The firearm is “off” safe or “ready to fire” when the “red band” marking **IS showing**.

⚠ WARNING The gun will fire when the trigger is pulled intentionally or unintentionally when the RED BAND MARKING IS SHOWING.

ON FIRE **ON SAFE**



⚠ WARNING Before loading, be sure that the firearm safety is ON SAFE– by pushing the manual safety button so that it protrudes from the right side of the firearm, and the chamber is empty.

⚠ WARNING Always check for obstructions in the barrels before using, as they can increase barrel pressure and cause the barrel to explode when fired. This can result in serious injury or death of the shooter and/or others in the vicinity.



LOADING THE FIREARM

You can load your firearm in the following ways:

A. Loading through the breech:

1. Always visually and physically check firearm to make sure it is unloaded and in the "safe" position.
2. Pull the bolt rearward until it locks in the open position (Fig. 7).
3. Place a shell into the breech (Fig. 8).

NOTICE Make sure the shells are of the correct gauge and chamber length for your firearm.

4. Release the bolt by pressing the button located toward the front of the receiver (Fig. 9).

NOTICE This chambers a round, and the firearm will fire if the trigger is pulled with the safety in the "off" position.

5. You can then load additional shells into the magazine by inserting them through the loading port on the bottom of the receiver and pushing them into the magazine (Fig. 10).

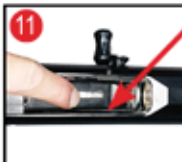


⚠ WARNING Your firearm is now loaded and is ready to fire as soon as the safety is pushed to the FIRE position indicated by the red ring around the safety. Keep your finger off the trigger and out of the trigger guard until you are ready to fire.

⚠ WARNING Panzer Arms is not responsible for damage to the firearm or the shooter that results from using malfunctioning, new, re-manufactured, reloaded, or hand-loaded ammunition.

B. Loading the magazine:

1. Always visually and physically check firearm to make sure it is unloaded and in the "safe" position.
2. Pull the bolt rearward until it locks in the open position (Fig. 7).
3. Load shells into the magazine by inserting them through the loading port located on the bottom of the receiver and pushing them into the magazine (Fig. 10).
4. Push back the magazine shell latch on the rear side of the carrier (Fig. 11). This allows the shell to exit the magazine and move into the carrier.
5. Release the bolt by pressing the button located toward the front of the receiver (Fig. 9).



When ready to fire your firearm, be sure of your target, what is behind it, and the location of all person within your vicinity. Pick your target, put the firearm "off" safe and squeeze the trigger with your forefinger.

⚠ WARNING Before unloading, be sure the safety is ON SAFE (push safety to the right of the firearm) and your firearm is pointed in a safe direction. Failure to do so can result in serious injury or death.

UNLOADING THE FIREARM

To unload, always first, visually and physically check firearm to make sure it is unloaded and in the "safe" position. Rapidly pull the bolt rearward to eject any shell in the chamber (Fig. 7). Lock the bolt open by pressing the magazine shell latch located on the rear side of the carrier (Fig. 11).



CLEARING MISFIRES

In case of a misfire, wait at least 30 seconds while keeping the firearm pointed in a safe direction. Then, rapidly pull the bolt rearward to eject any shell in the chamber (Fig. 7). Lock the bolt open by pressing the magazine shell latch located on the rear side of the carrier (Fig. 11). Inspect the eject shells. If the primer on the rim is indented, the shell should be discarded in a manner that would prevent accidental injury to you and others. If there is no indentation on the primer or rim, your firearm has malfunctioned and should be serviced by a qualified gunsmith. If the firearm is under warranty it must be serviced by an authorized gunsmith or it will void your warranty.

⚠ WARNING Before disassembling your firearm, make sure it is pointed in a safe direction, is ON SAFE and inspect the chamber to make sure it is UNLOADED. Make sure the barrel is clear of any obstructions. Never modify the parts in your firearm. Always wear eye protection that is specified for use with firearms when handling or performing maintenance on your firearm. Never put your hand in front of the muzzle.

FIELD STRIPPING

The following instructions should be observed during disassembly and assembly.

- Always visually and physically check firearm to make sure it is unloaded and is in "safe" condition.
- Never keep live ammunition in the same room as firearm when handling or working on it.
- The firearm should be disassembled on a table or bench.
- The parts should be laid out in order of disassembly.
- Force should not be used to remove or disassemble parts, as it may result in damage to the parts.
- Only parts and accessories in good condition and designed for this model firearm should be used.
- Only use proper tools designed for firearms when cleaning. Always use screw drivers that are designed for firearms and fit screw slots properly to avoid damaging screw heads and slots.

Steps to field strip your firearm:

1. Make sure the firearm is unloaded and no shells are in the chamber.

2. Unscrew the Magazine Tube Cap.(Fig.12)

⚠ WARNING If you try to unscrew Barrel Shroud first that may cause scratches.

3. Unscrew the Barrel Shroud Cap.(Fig.13)

4. Take off the Handguard.(Fig.14)

5. Unscrew the Barrel Nut Screw.(Fig.15)

6. Disassembly the Barrel Nut.(Fig.16)

7. Pull the Action Bar towards back.(Fig.17)

8. Disassembly the Operating Handle.(Fig.18)

9. Disassembly the Barrel Group.(Fig.19)

The firearm is now completely stripped. All the parts that require routine maintenance and cleaning are disassembled. The forearm should be reattached to the barrel for storage.



NOTICE No further disassembly is needed, unless it is done by person(s) qualified in shotgun repair. Improper functioning and damage to the firearm may result otherwise and void your warranty.



⚠ WARNING Before assembling, be sure that the firearm safety is ON SAFE—by pushing the manual safety button so that it protrudes from the right side of the firearm, and the chamber is empty.

FIREARM REASSEMBLY

- 1-Assembly Barrel to the Receiver.(Fig.20)
- 2-Screw the Barrel Nut.(Fig.21)
- 3-screw the barrel nut screw.(Fig.22)
- 4-Pull the Action Bar towards back.(Fig.23)
- 5-Assembly the Operating Handle.(Fig.24)
- 6-Assembly the Handguard.(Fig.25)
- 7-Screw the Magazine Tube Cap.(Fig.26)
- 8-Screw the Barrel Shroud.(Fig.27)



⚠ WARNING Before disassembling your firearm, make sure it is pointed in a safe direction, is ON SAFE and inspect the chamber to make sure it is UNLOADED. Make sure the barrel is clear of any obstructions. Never modify the parts in your firearm. Always wear eye protection that is specified for use with firearms when handling or performing maintenance on your firearm. Never put your hand in front of the muzzle.

⚠ WARNING Before using the shotgun, make sure that the barrel has a choke correctly installed. The internal choke correctly mounted must not stick out of the barrel's muzzle. It must not remain inside the barrel. Use only the Panzer Arms internal choke length which correctly fits the barrel.

INSTALLATION OF THE MAGAZINE PLUG

Since hunting regulations in some areas limit the number of cartridges allowed in the magazine, this shotgun comes with a limiter plug installed in magazine tube that reduces the capacity of to magazine tube to two cartridges.

Installation:

1. Remove the fore-end screw cap and the barrel (Fig.28)
2. At the threaded end of the magazine tube, where the fore-end screw cap fits, locate a black snap ring (Fig.29)

NOTE: A large blade screw driver should be used to remove the snap ring.

⚠ WARNING The snap ring will be under pressure from the magazine spring. Do not remove the snap ring in a manner where the ring could fly out and strike you or anyone else causing injury, particularly to the eye.


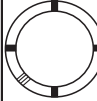
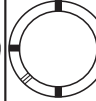
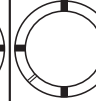


3. Compress the magazine spring into the magazine tube, and insert the magazine plug (small end first). Push the magazine plug and insert the snap ring so the snap ring end is flush with the end of the tube (Fig.30)
4. Re-attached the fore-end screw cap and the barrel(Fig.31)



CHOKE TUBE - CLEANING AND MAINTENANCE

Before storing your firearm for long periods of time, it is recommended to clean the internal choke and relative barrel thread.

The choke controls how open or tight the pattern of the shot will be. The chart below lists the chokes available (from open to tight), and the core spending marks that indicate the specific choke.

	SKEET	IC	M	IM	F	XF
CHOKE TUBE						
BMLS	CL	HHHH	HHH	HH	H	XF

To change or clean the internal choke, proceed as follows:

1. Insert the tube into the end of the barrel and tighten with your fingers.
2. Once the tube is finger tightened, tighten with the appropriate choke-tube wrench until the tube is snug. **DO NOT over tighten or forcefully tighten with wrench.**

NOTICE Never fire or run firearm cleaning tools through a barrel that uses choke tubes without having a choke tube installed. The threads of the choke tube and the internal threads of the barrel should be cleaned after each use and before installations of the tube.

NOTICE Never fire your firearm without choke tubes snugly tightened in barrels. **DO NOT** over tighten or forcefully tighten with the wrench.

NOTICE If your firearm is equipped with choke tubes, do not use a brass brush to clean the barrels without having a choke tube installed. Barrels that utilize choke tubes must also have the choke tubes REMOVED to clean and oil the threads inside the barrel and the choke tubes themselves. This will protect the threads and prevent dirt build up that can cause tubes to become difficult to remove. This could result in damage to the choke tubes and/or barrel when attempting to remove.

NOTICE Do not apply more oil to the firearm than is mentioned above. Doing so may result in an increased amount of powder residue which can lead to misfires and jamming issues. Do not squirt or pour oil into the inside mechanism because it may hamper proper functioning.

For maintenance of the choke and relative seat, carefully read the instructions in the Choke Tube section.



⚠ WARNING Before assembling, be sure that the firearm safety is ON SAFE—by pushing the manual safety button so that it protrudes from the right side of the firearm, and the chamber is empty.

CLEANING, PROPER CARE AND MAINTENANCE

Regular cleaning and care will ensure longevity and enjoyment of your firearm. To keep the firearm in good working order, it is recommended to oil the parts subject to atmospheric corrosion. Firearm should be lubricated before shooting and periodically during long shooting sessions. No special maintenance is required. However, the following maintenance is recommended: normal cleaning of the barrel after use; periodical cleaning or lubrication of the firing mechanism, consisting of hammer, trigger, etc.

Cleaning and lubrication

1. Make sure the breech block and receiver are clean and lightly oiled with high quality gun oil. DO NOT USE silicone, lanolin, or WD-40.
2. Run an oil patch through the bore with a cleaning rod starting from the breech end. To prevent leading, use a cleaning solvent and brass brush to clean the bore periodically. Follow this cleaning with one or two clean oil patches.
3. Wipe down additional parts with bore cleaner or CLP until loose carbon and dirt is removed.
4. Wipe parts clean with soft dry cloth and apply lubrication.
5. Care for your wood stock and forearm the same way you would a piece of furniture with the same finish.

USAGE OF STEEL SHOT

NOTICE The choke (constriction) in all modern shotguns has been established based on the pattern performance of shot shells loaded with lead shot. When using steel shot shells, you will notice a different performance in pattern density versus the established lead shot pattern, because steel shot is harder and lighter than lead shot.

You should be aware of the following:

Never shoot steel shot loads in a full choked barrel or an improved modified choked barrel. To do so may cause the barrel to swell or rupture. In general, steel shot fired with a modified choke will produce the equivalent of a lead full choke pattern. This will be true of all steel shot sized up to and including no. 2. The established improved cylinder chokes will produce the equivalent of a (lead) modified pattern.

All steel shot sized larger than no. 2, and including special sized such as F, T, etc., should be used only with improved cylinder chokes. These steel shot sizes, when used in an improved cylinder choke, will produce equivalent to (lead) full choke patterns. The established cylinder choke or bore will produce the equivalent of a modified (lead) pattern.

Additional information concerning the use of steel shot is available from the ammunition companies.



⚠ WARNING Never leave a loaded firearm unattended.

STORAGE

Always keep and store your firearm in an unloaded condition with the safety in the SAFE position. Keep the firearm and ammunition away from children and unauthorized persons. Firearms should be stored separately from ammunition. Store your firearm in a dry place to prevent corrosion. Wipe all exposed metal surfaces with an oiled cloth before storing. Store your firearm in a case to prevent scratches and dents.

IMPORTANT CONSIDERATIONS FOR SELECTING AMMUNITION

Shotgun ammunition has an extremely wide range of projectile styles, weights, and velocities. Gas-operated shotguns are only intended to run on STANDARD weight and velocity ammunition. Most ammunition labeled “low recoil” does not have enough pressure to operate semi-auto shotguns. There are also many styles of ammunition that are beyond the factory recommendations for weight or velocity. 1.75 oz maximum or 1600 feet per second is the maximum safe limit.

AMMUNITION RECOMMENDATIONS AND GUIDELINES

Your panzer arms shotgun is designed to give you a lifetime of use with standard loads from 1oz to 1.75oz and 1250 feet per second to 1600 feet per second maximum. Shooting ammunition that is above the maximum weight or above the maximum 1600 velocity will cause damage, void your warranty, and could cause personal injury. It is your responsibility to understand what ammunition is and is not acceptable to use in your panzer arms shotgun.

⚠ WARNING Only an authorized Panzer Arms or qualified gunsmith should inspect and repair your firearm.

SERVICE

After extended periods of heavy use, your firearm should be taken to a qualified gunsmith to have the action disassembled for professional cleaning and lubrication.

Do not return defective or damaged product to the dealer. If your firearm needs repair, call Panzer Arms 724-590-1577 and ask for the Service Department or visit www.panzerarmsusa.com.

DO NOT ATTEMPT TO DISASSEMBLE IT!

Your firearm requires special tools and fixtures to repair it.

Any disassembly or modification not performed by Panzer Arms will void the warranty.

DO NOT RETURN THIS FIREARM TO THE DEALER: If you have any questions or concerns about Panzer Arms, Inc. products, please contact us at 724-590-1577 or panzerservice@gmail.com and one of our service techs will be glad to assist you.



PANZER ARMS (1) YEAR WARRANTY

WARRANTY

The manufacturer provides to the original retail purchaser a LIMITED WARRANTY for a period of one (1) year from the date of purchase against defects in material or workmanship. It will be the discretion of the manufacturer and importer as to whether the parts/labor or replacement will result in a charge to the consumer. The importer or manufacturer has the right to research, inspect, and test the weapon to assess any claim made under the warranty.

WARRANTY EXCLUSIONS.

The warranty is VOID if the firearm has been altered, abused, misused, damaged by accident, fired with hand loaded or reloaded ammunition, obstructions in the barrel, or damage due to failure to provide regular and necessary maintenance. Also this warranty is VOID if any unauthorized repair or alteration is performed on the firearm.

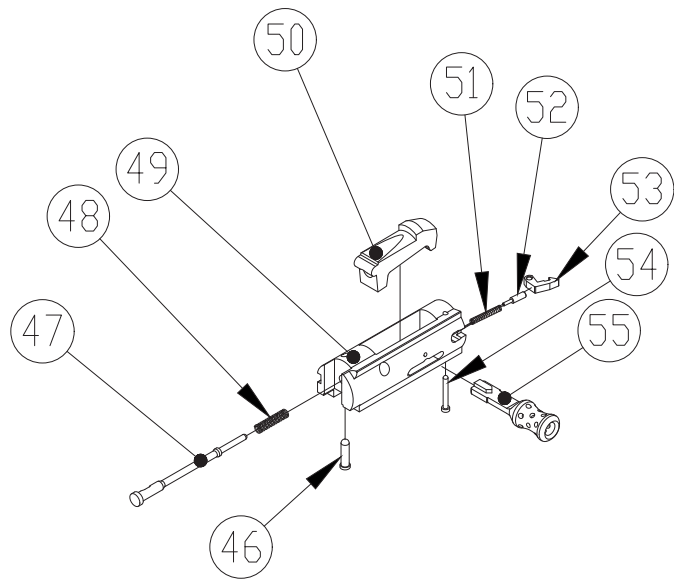
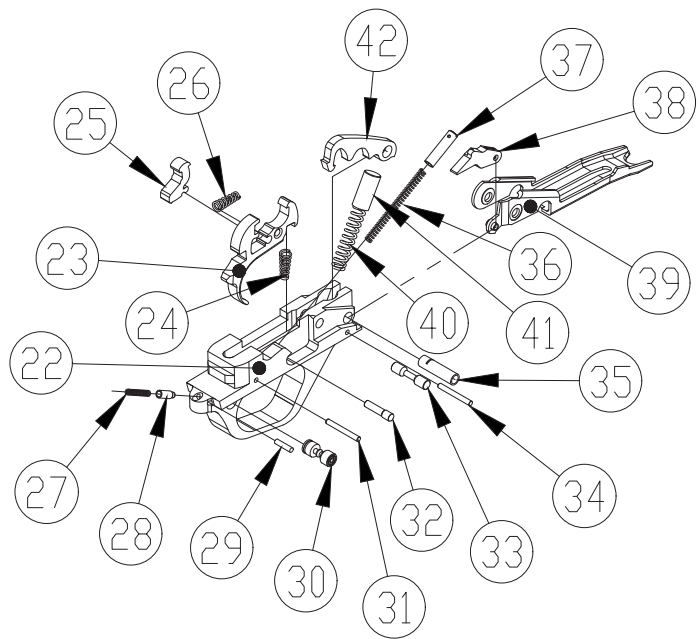
WHAT IS COVERED: Replacement parts and labor.

WARRANTY CLAIMS:

If your Panzer Arms firearm is found to have defects in materials or workmanship, we will repair it free of charge for the duration of one (1) year. This warranty does not apply to owner neglect or abuse of the product. Contact Panzer Arms for information on how to send your firearm in for repair. DO NOT SHIP YOUR FIREARM WITHOUT CONTACTING OUR CUSTOMER SERVICE DEPARTMENT FIRST FOR INFORMATION ON HOW TO DO SO.

Panzer Arms
84 State Route 380 W
Apollo, PA 15613
724-590-1577 -
panzerservice@gmail.com





PARTS IDENTIFICATION

1 Butt Plate Screw	28 Safety Button Pin	56 Barrel
2 Butt Plate Screw	29 Safety Button Spring Pin	57 Gas Block Screws
3 Receiver Stud	30 Safety Button	58 Main Spring
4 Locking Plate	31 Trigger Stopper Pin	59 Barrel Nut
5 Checkpad Nut	32 Trigger Pin	60 Barrel Nut Set Screw
6 Checkpad Screw	33 Carrier Pin	61 Piston
7 Checkpad Nut Screw	34 Hammer Stopper Pin	62 Gas Block O-ring
8 Checkpad	35 Hammer Pin	63 Gas Block
9 Stock	36 Bolt Stop Spring	64 Gas Block Screw
10 Stock Retaining Tube	37 Bolt Stop Spring Cap	65 Choke
11 Stock Retaining Tube Screw	38 Bolt Stop	66 Magazine Plug
12 Receiver	39 Carrier	67 Magazine Cap Detent Ball
13 Carrier Latch Frame	40 Hammer Spring	68 Magazine Cap Detent Ball Spring
14 Carrier Latch Spring	41 Hammer Spring Pin	69 Magazine Cap Detent Ball Nut
15 Carrier Latch Pin	42 Hammer	70 Magazine Cap Detent
16 Bolt Release Button	43 Slide Assembly	71 Magazine Tube Spring
17 Bolt Release Button Spring	44 Charging Handle Detent Ball	72 Magazine Tube
18 Bolt Release Button Pin	45 Charging Handle Detent Ball Spring	73 Rear Plug
19 Bolt Release Button Cap	46 Firing Pin Retaining Pin	74 Handguard
20 Bolt Release Button Cap Nut	47 Firing Pin	75 Handguard Retaining Plate
21 Trigger Group Pin	49 Bolt	76 Handguard Retaining Plate Nut
22 Trigger Group Assembly	50 Lock	77 Handguard Retaining Plate Spring
23 Trigger	51 Extractor Spring	78 Handguard Retaining Plate Ball
24 Trigger Spring	52 Extractor Spring Pin	79 Handguard Retaining Plate
25 Disconnecter	53 Extractor	80 Magazine Tube Shroud
26 Disconnecter Spring	54 Extractor Plunger	81 Barrel Shroud
27 Safety Button Spring	55 Charging Handle	